

LABELLING

1. Figure 1 shows a microscope. (Rajah 1 menunjukkan sebuah mikroskop)

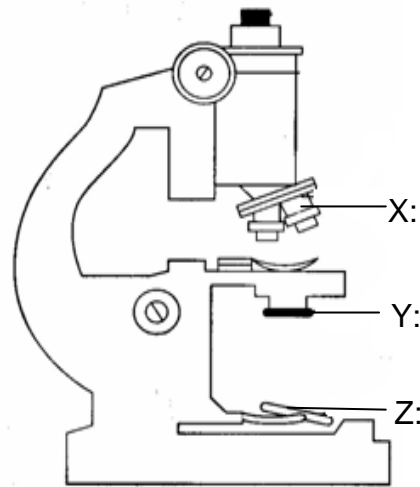


FIGURE 1

(a) On Figure 1, name the parts marked with X, Y, and Z using the following words. (Namakan bahagian berlabel X, Y dan Z menggunakan perkataan berikut)

Diaphragm	Mirror (Cermin)	Objective lens (Kanta objek)
-----------	------------------	------------------------------

[3 marks]

(b) Based on Figure 1, match X, Y and Z to their functions. Write X, Y or Z in the correct boxes.

Part	Function
	To control the amount of light entering the lens (Mengawal jumlah cahaya memasuki kanta)
	To magnify specimens (Membesarkan saiz spesimen)
	To reflect light into the objective lens (Memantulkan cahaya kepada kanta objek)

[3 marks]

2. Figure 2 shows a plant cell. (Rajah 2 menunjukkan sel tumbuhan)

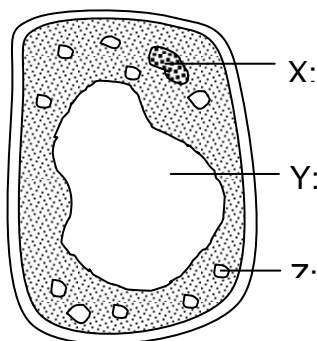


FIGURE 2

- (a) On Figure 2, label structures X, Y and Z using the following words. (Pada rajah 2 labelkan struktur X, Y dan Z menggunakan perkataan-perkataan berikut)

Vacuole	Nucleus	Chloroplast
---------	---------	-------------

[3 marks]

- (b) W gives support and maintains the shape of the cell. Label W on Figure 2. (W memberikan sokongan dan mengekalkan bentuk sel. Labelkan W pada rajah 2)

[1 mark]

- (c) Based on Figure 2, state the function of Y. (Berdasarkan rajah 2 nyatakan fungsi Y)

[1 mark]

3. Figure 3 shows an animal cell and a plant cell.

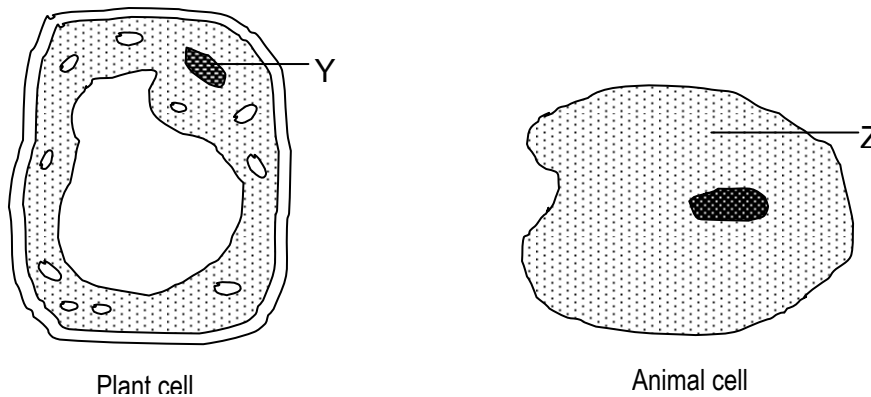


FIGURE 3

- (a) X contains chlorophyll for the process of photosynthesis. Label X in Figure 3. (X mengandungi klorofil untuk proses fotosintesis. Labelkan X dalam rajah 3)

[1 mark]

- (b) State the functions of structures Y and Z and complete the table below. (Nyatakan fungsi struktur Y dan Z dan lengkapkan jadual di bawah)

Name of structure / Nama struktur	Function of structure / Fungsi struktur
Y	
Z	

[2 marks]

- (c) Name two similar structures that can be found in both the plant and animal cells. (Namakan dua persamaan struktur yang boleh dijumpai dalam sel tumbuhan dan sel haiwan)

- i) _____
- ii) _____

[2 marks]

X	Y	Z



4. Figure 4 shows some cells found in the human body. (Rajah 4 menunjukkan beberapa sel dalam badan manusia)

FIGURE 4.1

(a) Label X, Y and Z on Figure 4.1 with the following words. (Labelkan X, Y dan Z pada rajah 4.1 menggunakan perkataan berikut)

Muscle cell / sel otot	Nerve cell / sel saraf	Sperm / sperma
------------------------	------------------------	----------------

[3 marks]

(b) What is the function of cell X ? (Apakah fungsi sel X ?)

[1 mark]

(c) Figure 4.2 shows the organisation of cells in the human body. What are P and Q? (Rajah 4.2 menunjukkan organisasi sel dalam badan manusia. Apakah P dan Q ?)

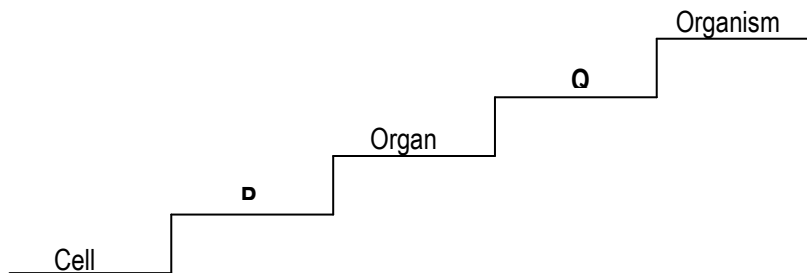


FIGURE 4.2

P:	
Q:	

[2 marks]

5. Figure 5.1 shows some organs found in the human body. (Rajah 5.1 merupakan beberapa organ di dalam badan manusia)

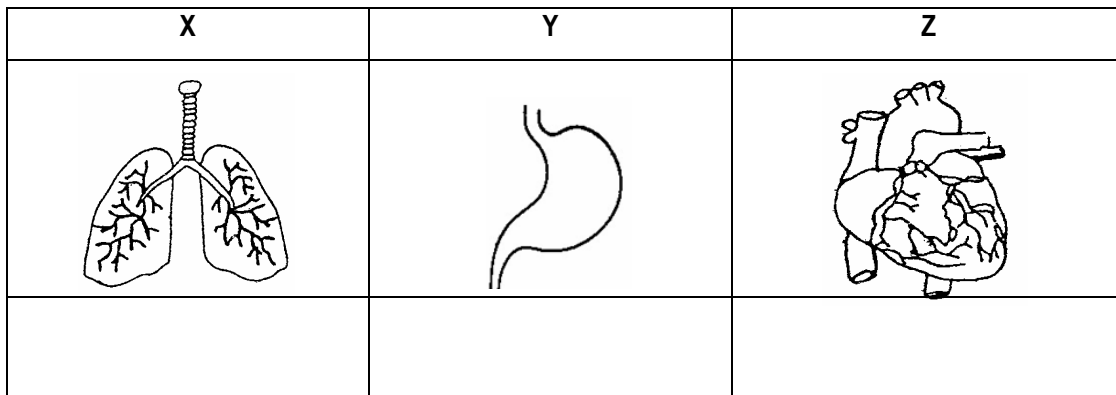


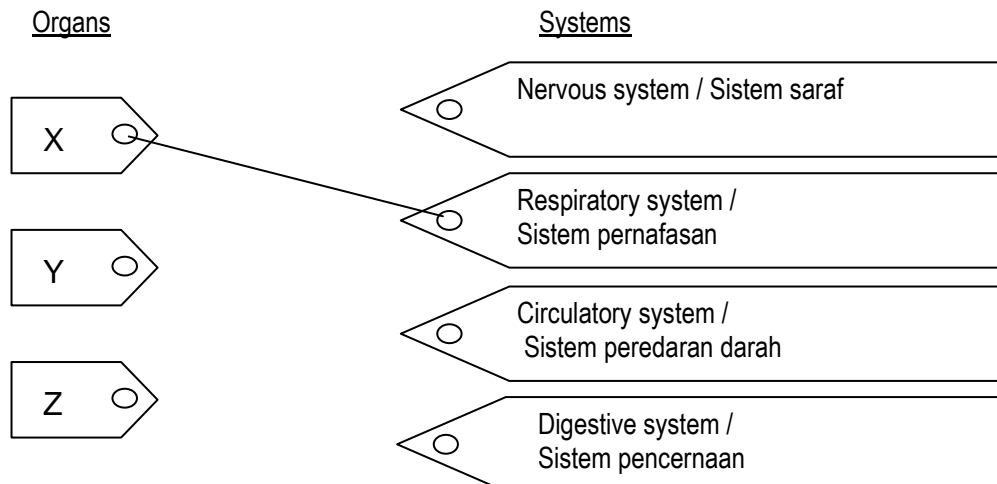
FIGURE 5.1 / RAJAH 5.1

- (a) On Figure 5.1, label organs X, Y and Z using the following words.
(Pada Rajah 5.1 labelkan organ tersebut)

Stomach / Perut	Lungs / Peparu	Heart / Jantung
-----------------	----------------	-----------------

[3 marks]

- (b) Draw lines to match the organs with the correct systems. Draw the lines as shown below.
(Padankan organ dengan system yang betul . Gariskan seperti contoh yang diberikan)



- (c) Complete Figure 5.2 to show the organisation of cells in the human body. (Lengkapkan Rajah 5.2 untuk menunjukkan organisasi sel dalam badan manusia) [2 marks]

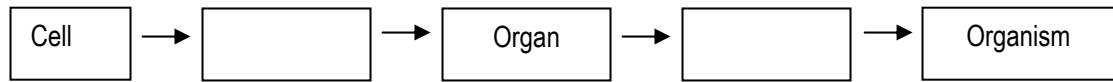


FIGURE 5.2 / RAJAH 5.2

6. Figure 6 shows the composition and percentage of the constituents of air. (Rajah 6 menunjukkan komposisi dan peratus udara) [2 marks]

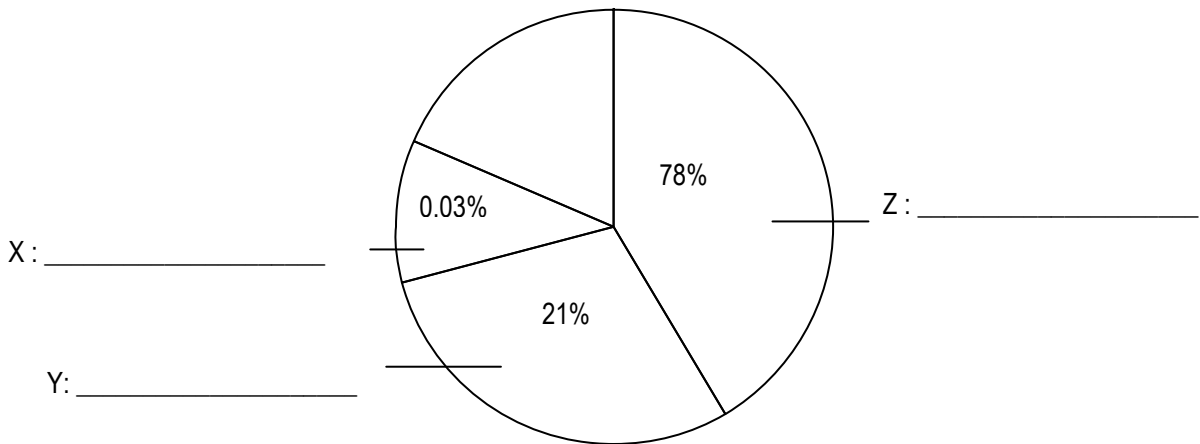


FIGURE 6 / RAJAH 6

- (a) On Figure 6, label the parts marked X, Y, and Z using the following words: (Labelkan pada Rajah 6 bagi X, Y dan Z menggunakan perkataan berikut)

Nitrogen	Carbon dioxide	Oxygen
----------	----------------	--------

- (b) Based on Figure 6, which of the constituents of air, X, Y or Z. (Berdasarkan Rajah 6, yang manakah kandungan udara bagi...) [3 marks]

(i) is needed for respiration? (diperlukan untuk respirasi)

(ii) is needed by green plants to make food during photosynthesis? (diperlukan oleh tumbuhan hijau untuk membuat makanan semasa fotosintesis)

7. Figure 7 shows pictures of forms of energy. (Rajah 7 menunjukkan bentuk-bentuk tenaga) [2 marks]

Picture 1	Picture 2	Picture 3
-----------	-----------	-----------

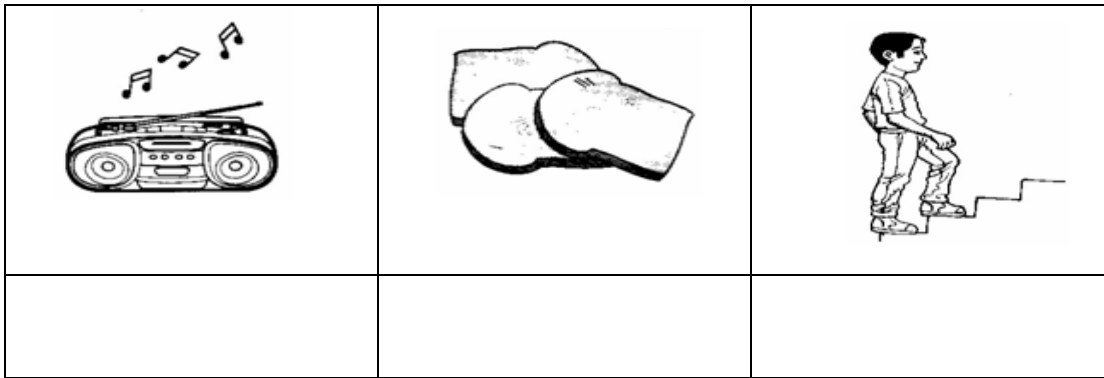
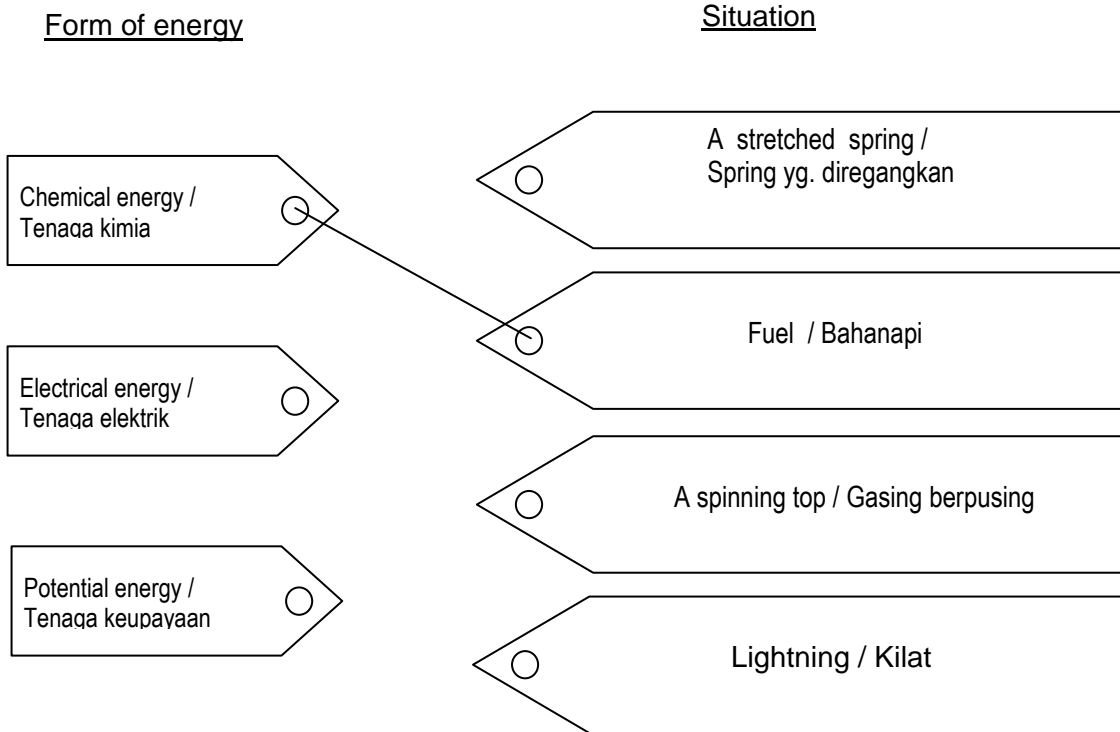


FIGURE 7 / RAJAH 7

- (a) On Figure 7, label the forms of energy using the words given below.
 (Pada rajah 7, labelkan bentuk-bentuk tenaga dengan perkataan berikut) [3 marks]

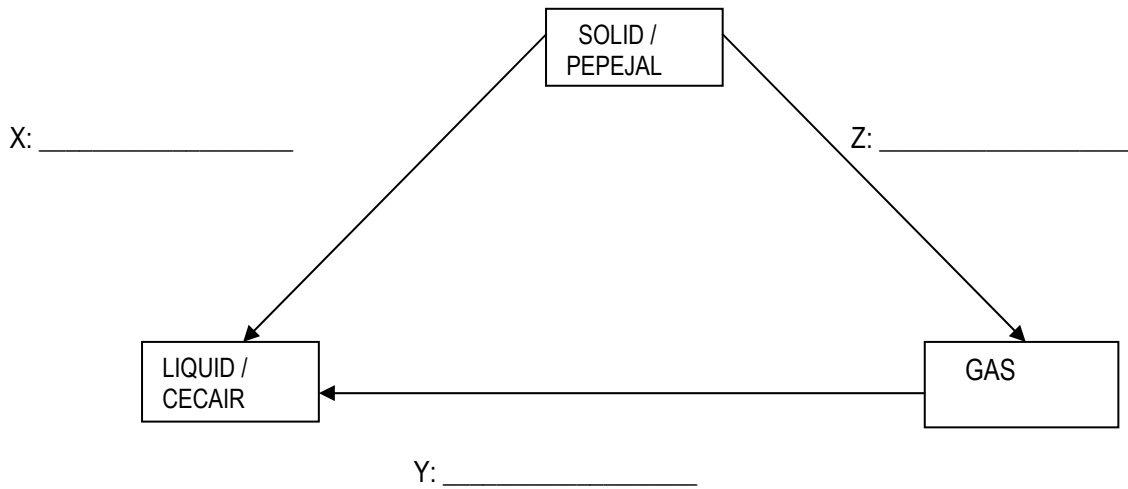
Chemical energy / Tenaga kimia	Sound energy / Tenaga bunyi	Kinetic energy / Tenaga kinetik
--------------------------------	-----------------------------	---------------------------------

- (b) Draw lines to show the situations related to the correct form of energy given. Draw the lines as shown below.
 (Padankan situasi dengan jenis tenaga yang diberikan seperti contoh yang diberikan)



[2 marks]

8. Figure 8 shows the changes in the state of matter when heat is gained or lost. (Rajah 8 menunjukkan perubahan keadaan jirim apabila mendapat atau kehilangan tenaga)



**FIGURE 8 /
RAJAH 8**

- (a) Label X, Y and Z on Figure 8 using the words given in the box below. (Labelkan X, Y dan Z pada rajah 8 menggunakan perkataan yang diberi dalam jadual di bawah)

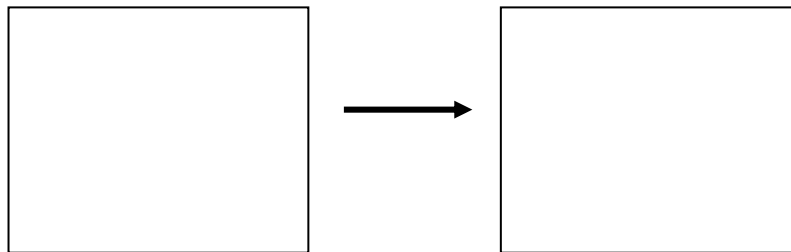
Sublimation / pemejalwapan	Condensation / kondensasi	Melting / peleburan
----------------------------	---------------------------	---------------------

- (b) Give **one** example of substance which undergoes process Z. (Berikan satu contoh bahan yang menjalani proses Z)

[3 marks]

[1 mark]

- (c) Draw the changes in the arrangement of particles in process X. (Lukis perubahan susunan zarah-zarah dalam proses X)



[2 marks]

9. Figure 9 shows a section through the human skin. (Rajah 9 menunjukkan keratan kulit manusia)

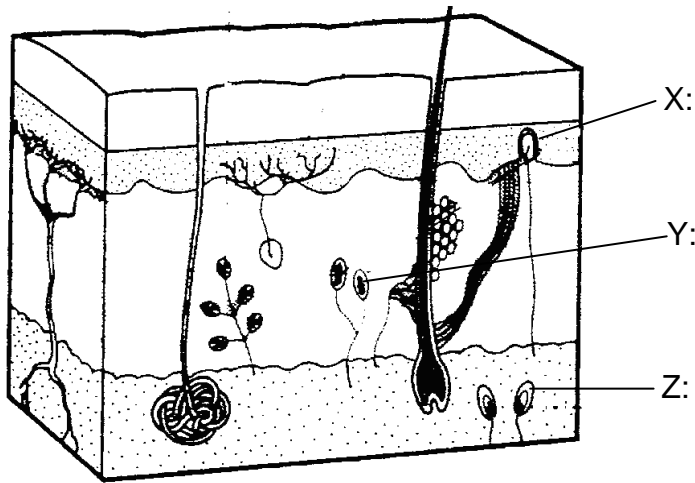


FIGURE 9

(a) Label structures X, Y, Z on Figure 9 using the following words. (Labelkan struktur X,Y, Z pada rajah 9)

Cold receptor / reseptor sejuk Touch receptor / reseptor sentuh Pressure receptor / reseptor tekanan

[3 marks]

(b) State the type of receptor which helps blind people to read Braille? (Nyatakan jenis reseptor yang membantu orang buta membaca Braille ?)

[1 mark]

(c) Why are the fingertips more sensitive than the soles of the feet? Give **one** reason. (Mengapa hujung jari lebih sensitive daripada tapak kaki ?. Berikan satu contoh)

[1 mark]

10. Figure 10 shows the structure of the human ear. (Rajah 10 menunjukkan struktur telinga manusia)

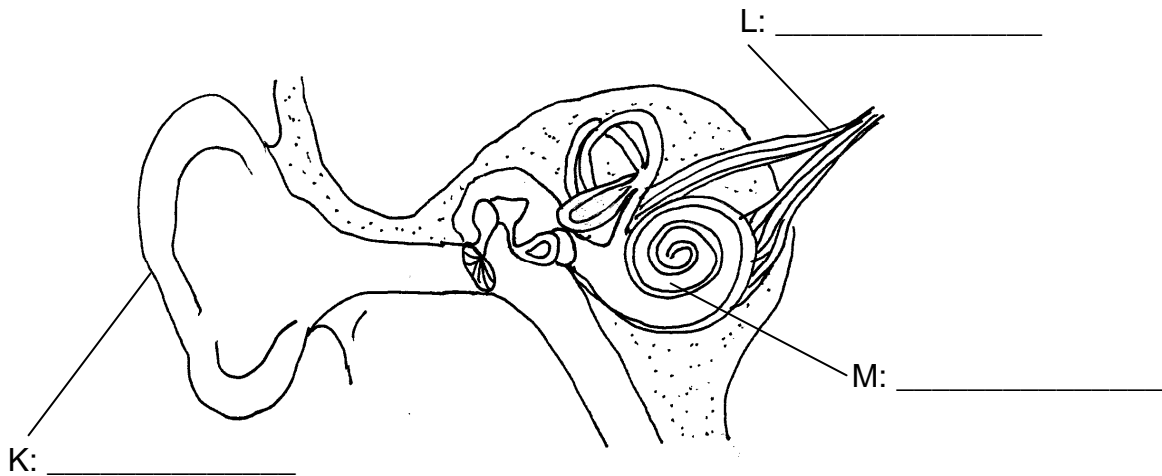


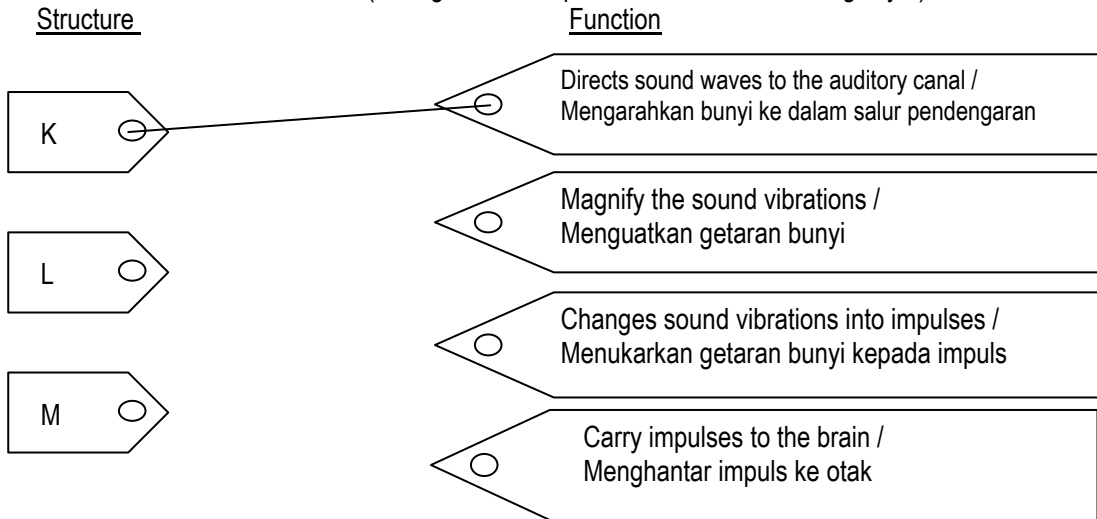
FIGURE 10 /
RAJAH 10

- (a) On figure 10, label K, L and M with the following words. (Pada rajah 10, labelkan K,L dan M dengan perkataan berikut)

Cochlea / koklea	Auditory nerve / saraf auditori	Pinna / cuping telinga
------------------	---------------------------------	------------------------

[3 marks]

- (b) Draw lines to show the correct match between the structures and their functions.
Draw the lines as shown below. (Buat garisan dan padankan struktur dan fungsinya)



11. Figure 11 shows the human eye. (Rajah 11 menunjukkan mata manusia)

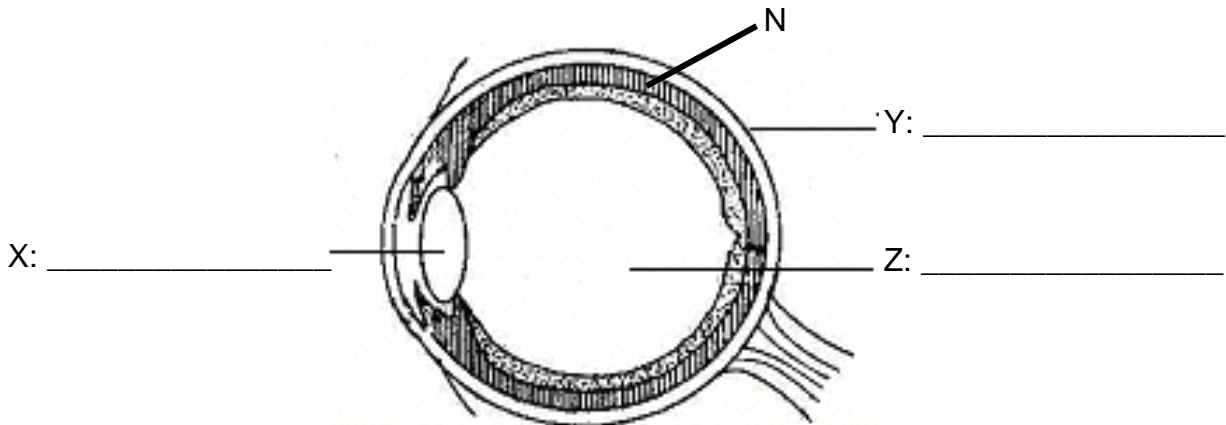


FIGURE 11

- (a) Label structures X, Y and Z in Figure 11 using the following words. (Labelkan struktur X,Y dan Z dgn perkataan berikut)

Vitreous humour / gelemaca	Sclera / sklera	Eye lens / kanta mata
----------------------------	-----------------	-----------------------

[3 marks]

(b) M is the most sensitive part of the retina. Label M on Figure 11. (M adalah bahagian retina paling sensitive pada retina. Labelkan M pada rajah 11) [1 mark]

(c) N is the middle layer of the eyeball. What is the function of N ? (N adalah lapisan tengah bola mata. Apakah fungsi N ?)

[1 mark]

(d) Name the part of the eye which controls the size of the pupil. (Namakan bahagian mata yang mengawal saiz pupil / anak mata)

[1 mark]

12. Figure 12 shows the taste areas on the human tongue. (Rajah 12 menunjukkan kawasan deria rasa pada lidah manusia)

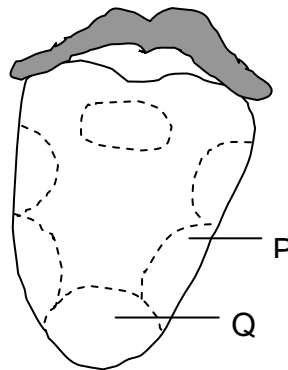


FIGURE 12

(a) Name the tastes that can be detected in areas P and Q. (Namakan jenis rasa yang boleh dikesan pada kawasan P dan Q)

P: _____

Q: _____

[2 marks]

(b) If a pupil tastes some vinegar, which area of the tongue will be stimulated? Label the part stimulated with an 'X'. (Jika seorang pelajar merasa cuka, kawasan mana pada lidahnya yang akan dirangsang ? Labelkan bahagian tersebut dengan ' X ') [1 mark]

(c) Name another sensory organ which is related to the sense of taste. (Namakan organ deria yang berkaitan dengan deria rasa .)

[1 mark]

(d) Explain why food is less tasty when a person has a cold. (Terangkan mengapa makanan kurang enak jika seseorang mengalami selsema ?)

[1 mark]

13. Figure 13.1 shows the reflection of light on a plane mirror.

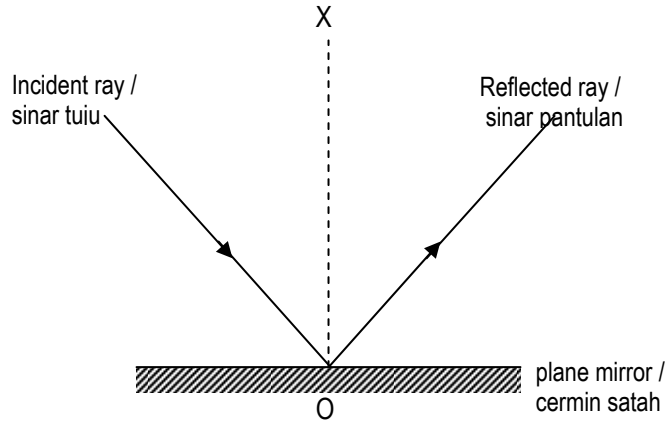


FIGURE 13.1

(a) Label the following on Figure 13.1 (Laeblkan perkataan berikut pada rajah 13.1)

Angle of incidence / sudut tuju	Angle of reflection / sudut pantulan
---------------------------------	--------------------------------------

[2 marks]

(b) XO is the line that is perpendicular to the plane mirror. What is XO known as?
(XO adalah garis yang bersudut tepat dengan permukaan cermin satah. Apakah garis XO ?)

[1 mark]

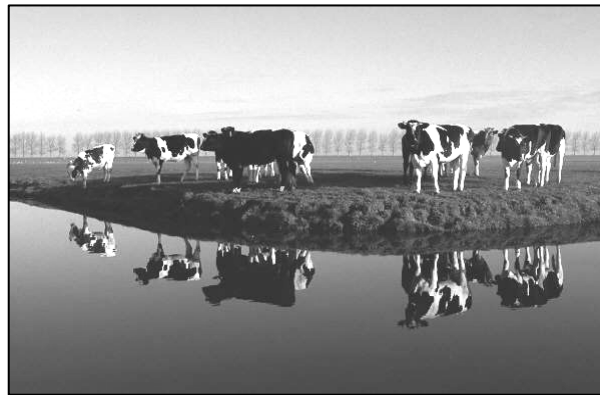


FIGURE 13.2

(c) Figure 13.2 shows the properties of the reflection of light. State **two** properties of the reflected image. (Rajah 13.2 menunjukkan ciri-ciri pantulan cahaya. Nyatakan dua ciri pantulan imej)

(i) _____

(ii) _____

[2 marks]

(d) Which of the following apparatus uses the principle of reflection? Circle the correct answer.
(Yang manakah alat berikut yang menggunakan prinsip pantulan cahaya ? Bulatkan jawapan yg betul.)

Binocular / teropong	Periscope / periskop	Spectacles / cermin mata
----------------------	----------------------	--------------------------

14. Figure 14.1 shows a ray of light traveling through different mediums, X and Y.
 (Rajah 14.1 menunjukkan sinar cahaya melalui bahan yang berlainan, X dan Y.)

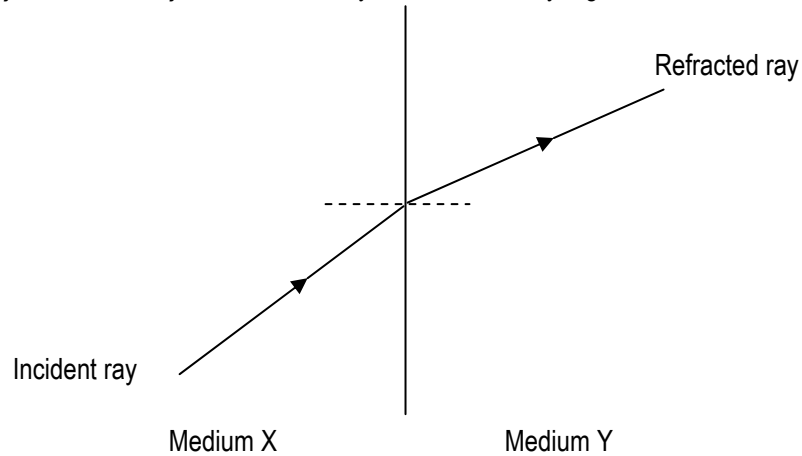


FIGURE 14.1

- (a) Name the phenomenon that is shown in Figure 14.1.
 (Namakan fenomena yang ditunjukkan dalam rajah 14.1)

_____ [1 mark]

- (b) Label the following on Figure 14.1. (Labelkan pada rajah 14.1)

Angle of incidence / sudut tuju	Angle of refraction / sudut pembiasan
---------------------------------	---------------------------------------

[2 marks]

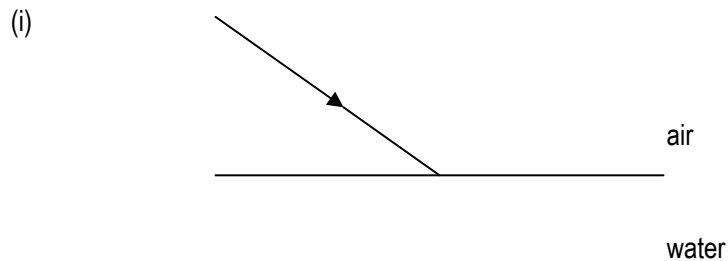
- (c)(i) Which is denser, medium X or medium Y? (Yang mana lebih tumpat di antara X atau Y?)

_____ [1 mark]

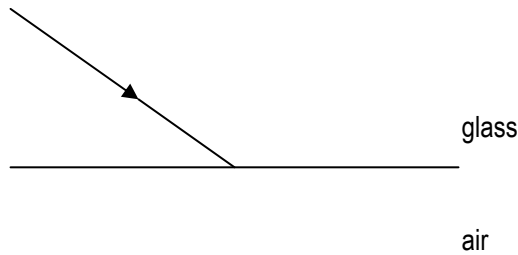
- (ii) Explain your answer in (c)(i). (Terangkan jawapan anda dalam (c)(i))

 _____ [1 mark]

- (d) On Figure 14.2, draw the ray of light as it passes through two different mediums.
 (Pada rajah 14.2, lukis sinar cahaya yang melalui dua medium yang berlainan)



(ii)



(iii)

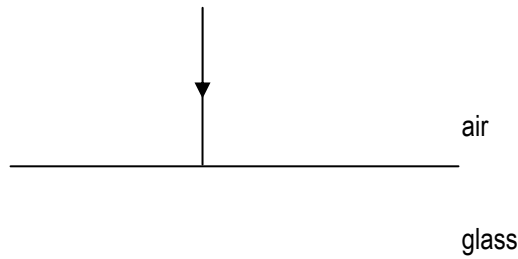


FIGURE 14.2

[3 marks]

- (e) Give **one** example of a natural phenomenon involving refraction of light.
 (Berikan satu contoh fenomena semuladi yang melibatkan pembiasan cahaya)

[1 mark]

15. Figure 15 shows the sources of three classes of food, P, Q and R. (Rajah 15 menunjukkan sumber-sumber bagi tiga kelas makanan P,Q dan R)

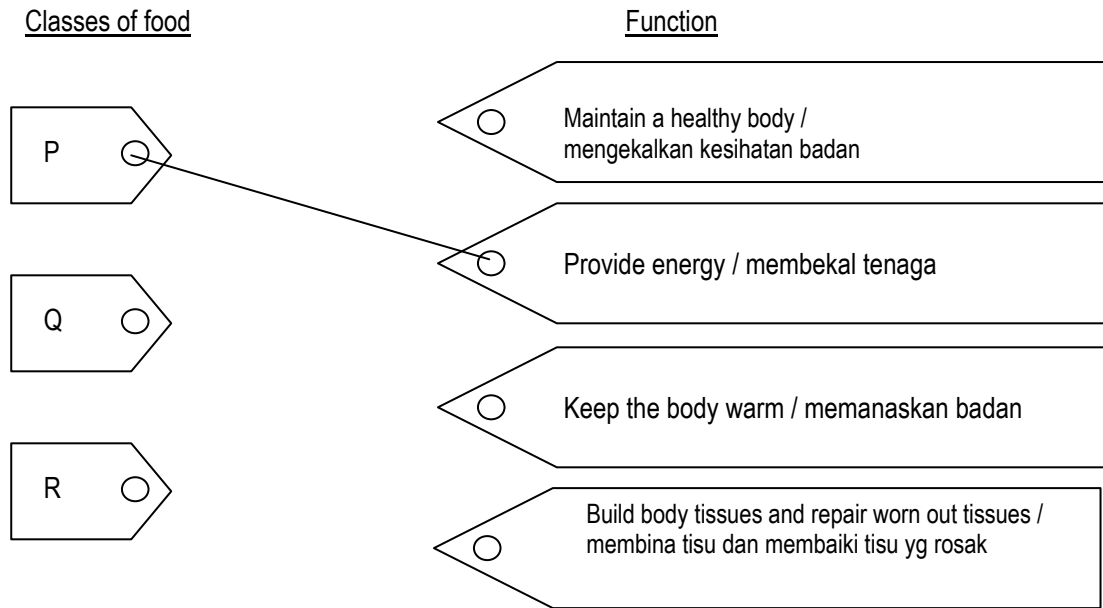
P	Q	R

FIGURE 15

- (a) On Figure 15, label P, Q and R with the following words. (Pada rajah 15, labelkan P, Q dan R dengan perkataan berikut)

Carbohydrates	Protein	Vitamins
---------------	---------	----------

- (b) Draw lines to show the correct match between the classes of food and their functions. Draw the lines as shown below. (Padankan kelas makanan dengan fungsinya dengan melukis garis seperti yang ditunjukkan)



16. Figure 16 shows the human alimentary canal. (Rajah 16 menunjukkan saluran pencernaan manusia)

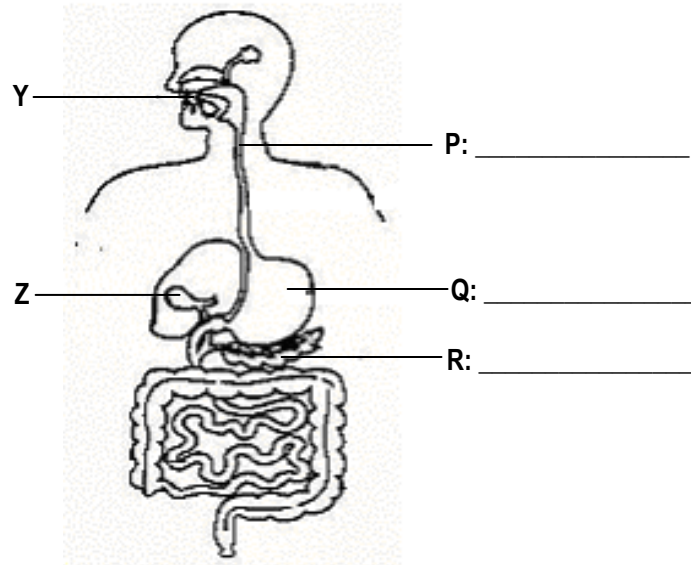


FIGURE 16

- (a) Label the parts P, Q and R on Figure 16 using the following words.
(Labelkan bahagian P, Q dan R pada rajah 16 menggunakan istilah berikut) [3 marks]

Pancreas / pankreas	Stomach / perut	Oesophagus / esofagus
---------------------	-----------------	-----------------------

- (b) The absorption of digested food into the blood capillaries happens at X. Label X on Figure 16.

(Proses penyerapan makanan tercerna ke dalam kapilari darah berlaku pada X. Labelkan X pada rajah 16)
[1 mark]

- (c) Name the enzyme that is found in Y and state its function.
(Namakan enzim yang terdapat dalam Y dan nyatakan fungsinya.)

[2 marks]

- (d) What is the function of Z? (Apakah fungsi Z ?)

[1 mark]

17. Figure 17 shows pictures of three types of relationships between organisms in a particular habitat.
(Rajah 17 menunjukkan gambar tiga jenis hubungan antara organisma dalam habitat tertentu)

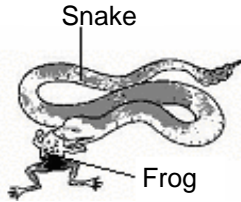
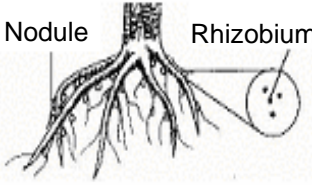
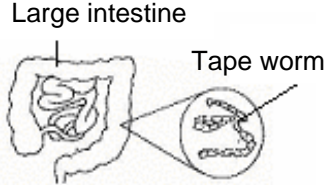
Picture 1	Picture 2	Picture 3
 <p>Snake</p> <p>Frog</p>	 <p>Nodule</p> <p>Rhizobium</p>	 <p>Large intestine</p> <p>Tape worm</p>

FIGURE 17 / RAJAH 17

- (a) On figure 17, label the type of interaction for each picture using the following words. (Pada rajah 17, labelkan jenis interaksi menggunakan perkataan berikut)

Mutualism	Prey-predator	Parasitism
-----------	---------------	------------

[3 marks]

- (b) State the interaction that benefits both organisms. (Nyatakan kebaikan interaksi di antara kedua-dua organisma)

[1 mark]

- (c) Which of the interactions can be used in biological control? (Yang manakah interaksi yang boleh digunakan sebagai kawalan biologi ?)

[1 mark]

18. Figure 18.1 shows a pair of tongs holding an ice cube. (Rajah 18.1 menunjukkan sepasang pengepit ais)

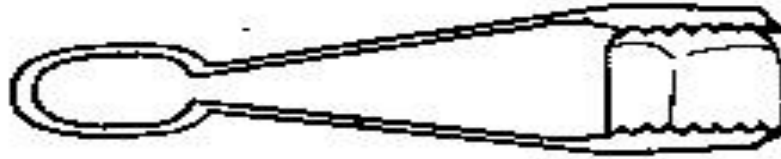


FIGURE 18.1 / RAJAH 18.1

(a) Label the following on Figure 18.1. (Labelkan bahagian-bahagian berikut pada Rajah 18.1)

Fulcrum / Fulkrum	Load / Beban	Effort / Daya
-------------------	--------------	---------------

[3 marks]

(b)(i) Based on Figure 18.1, state the class of lever of the tongs.
(Berdasarkan Rajah 18.1, nyatakan kelas tuas pengepit)

[1 mark]

(ii) Give one reason for your answer in (b)(i). (Berikan satu sebab bagi jawapan anda dalam (b)(i))

[1 mark]

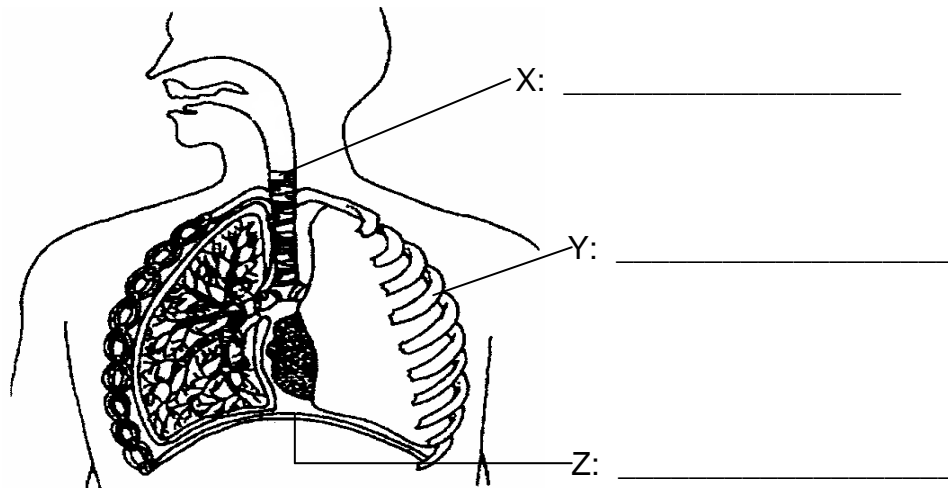
(c) Based on Figure 18.2, choose **one** tool which is in the same class of lever as the pair of tongs in Figure 18.1. Mark (✓) in the box for the tool. (Berdasarkan Rajah 18.2, pilih satu alat yang sama kelas tuas dengan pengepit ais dalam Rajah 18.1. Tandakan (✓) pada petak disediakan)

<input type="checkbox"/> Nut cracker	<input type="checkbox"/> Fishing rod	<input type="checkbox"/> Claw
---	---	--------------------------------------

[1 mark]

FIGURE 18.2 / RAJAH 18.2

19. Figure 19 shows the human respiratory system. (Rajah 19 menunjukkan system pernafasan manusia)



**FIGURE 19/
RAJAH 19**

(a) On Figure 19, label X, Y and Z with the following words. (Pada Rajah 19, labelkan X,Y dan Z dengan perkataan-perkataan berikut)

Diaphragm/ Diafragm	Trachea / Trakea	Rib / Tulang rusuk
---------------------	------------------	--------------------

[3 marks]

(b) Draw lines to show the correct match between the structures and their function. Draw the lines as shown below. (Lukis garisan untuk padanan struktur dan fungsi yang betul seperti dalam contoh yang diberikan)

Structure

Function

<div style="border: 1px solid black; padding: 5px; width: 60px; height: 40px; display: flex; align-items: center; justify-content: center; margin-bottom: 10px;">X</div> <div style="border: 1px solid black; padding: 5px; width: 60px; height: 40px; display: flex; align-items: center; justify-content: center; margin-bottom: 10px;">Y</div> <div style="border: 1px solid black; padding: 5px; width: 60px; height: 40px; display: flex; align-items: center; justify-content: center;">Z</div>	<div style="border: 1px solid black; padding: 5px; width: 300px; height: 40px; display: flex; align-items: center; justify-content: center; margin-bottom: 10px;">○</div> <div style="border: 1px solid black; padding: 5px; width: 300px; height: 40px; display: flex; align-items: center; justify-content: center; margin-bottom: 10px;">○</div> <div style="border: 1px solid black; padding: 5px; width: 300px; height: 40px; display: flex; align-items: center; justify-content: center; margin-bottom: 10px;">○</div> <div style="border: 1px solid black; padding: 5px; width: 300px; height: 40px; display: flex; align-items: center; justify-content: center;">○</div>
---	--

Allows air to flow from the nasal cavity into the lungs. (Membenarkan udara melalui rongga hidung ke peparu)

Move up and down to increase the volume of the thoracic cavity. (Bergerak ke atas dan ke bawah untuk menambah isipadu rongga toraks)

Contract and relax to increase the volume of the thoracic cavity. (Mengecut dan mengendur untuk menambah isipadu rongga toraks)

Allow gases to diffuse into and out of the blood capillary (Membenarkan gas meresap masuk dan keluar dari kapilari darah)

[2 marks]

20. Figure 20 shows longitudinal section of the human heart.
 (Rajah 20 menunjukkan keratan memanjang jantung manusia)

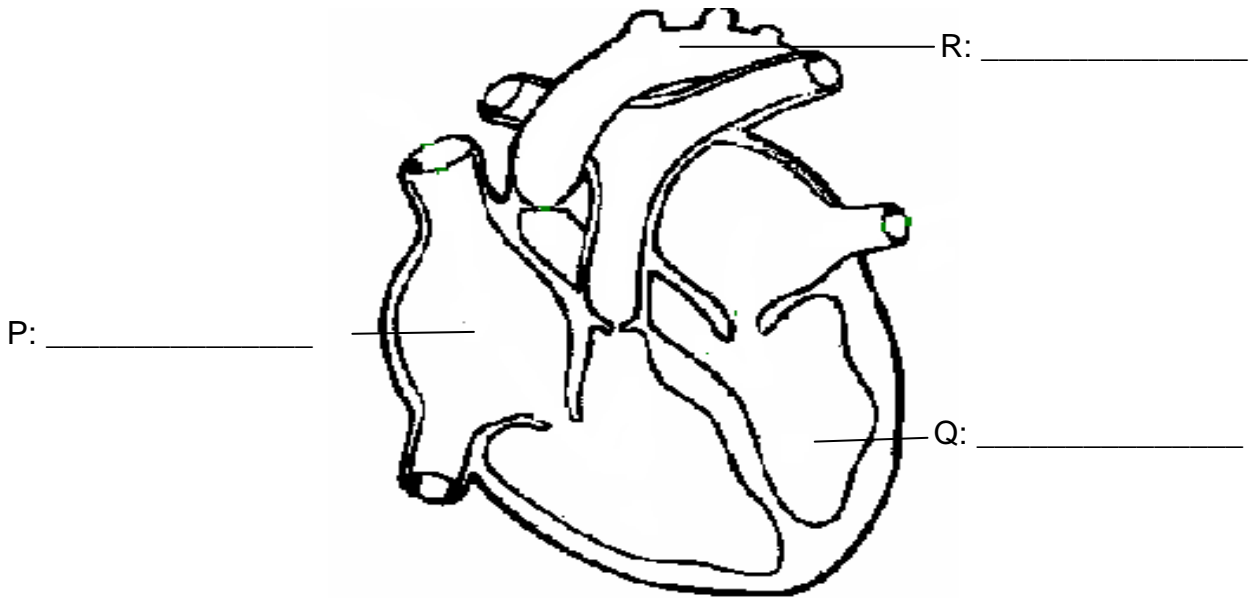


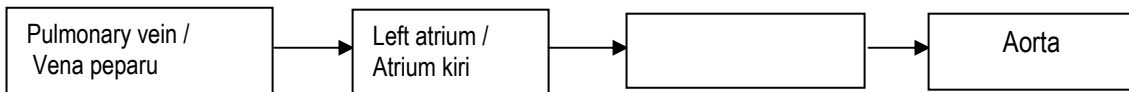
FIGURE 20 / RAJAH 20

- (a) On Figure 20, label structures P, Q and R using the following words. (Pada Rajah 20, labelkan struktur P,Q dan R menggunakan perkataan berikut)

Right atrium / Atrium kanan	Aorta	Left ventricle / Ventrikel kiri
-----------------------------	-------	---------------------------------

[3 marks]

- (b) Blood from the lungs enters the heart through X. Label X on the figure.
 (Darah dari paru-paru memasuki jantung melalui X. Labelkan X pada rajah) [1 mark]
- (c) Mark using arrow, \longrightarrow to show the flow of oxygenated blood in the heart.
 (Tandakan anak panah untuk menunjukkan pengaliran darah beroksigen dalam jantung) [1 mark]
- (d) Complete the sequence to show the flow of oxygenated blood in the heart.
 (Lengkapkan carta aliran menunjukkan peredaran darah dalam jantung)



[1 mark]

21. Figure 21 shows the blood vessels found in the human body. (Rajah 21 menunjukkan salur darah-salur darah dalam badan manusia)

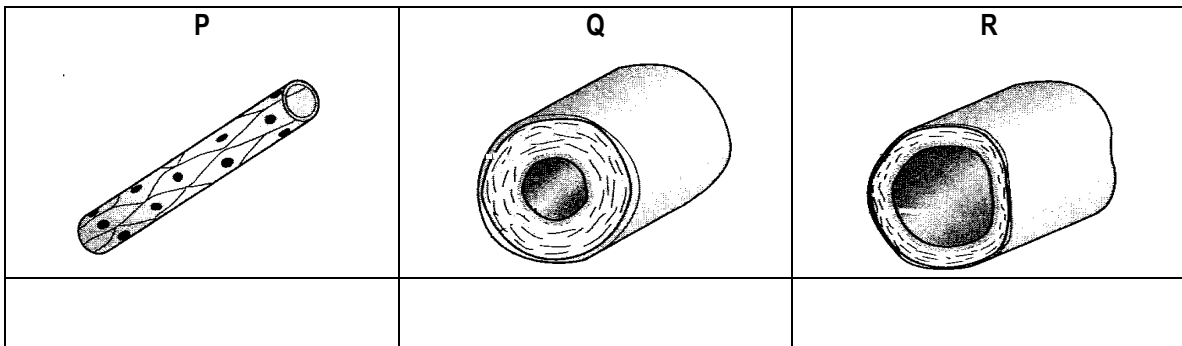


FIGURE 21 / RAJAH 21

- (a) Label P, Q and R on Figure 21 with the following words:
(Labelkan P, Q dan R pada Rajah 21 dengan perkataan berikut :)

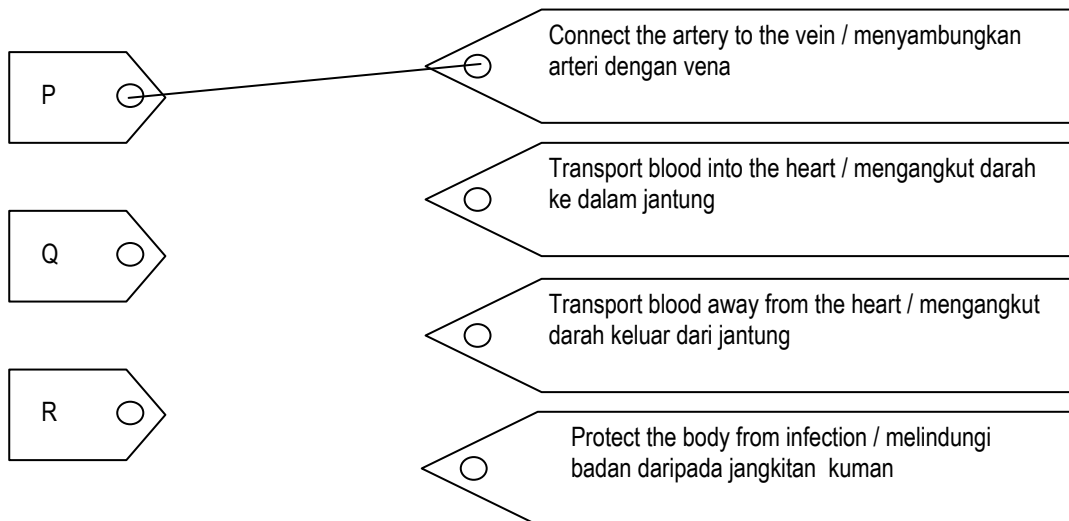
Artery / arteri	Capillary / kapilari	Vein / vena
-----------------	----------------------	-------------

[3 marks]

- (b) Draw lines to show the correct match between the structures and their functions. (Lukis garisan untuk menunjukkan padanan yg betul antara struktur dan fungsinya.)
Draw the lines as shown below. (Lukis seperti contoh di bawah)

Structure / struktur

Function / fungsi



[2 marks]

22. Figure 22 shows the cross section of a stem of a dicotyledonous plant.
 (Rajah 22 menunjukkan keratan rentas batang tumbuhan dikotiledon)

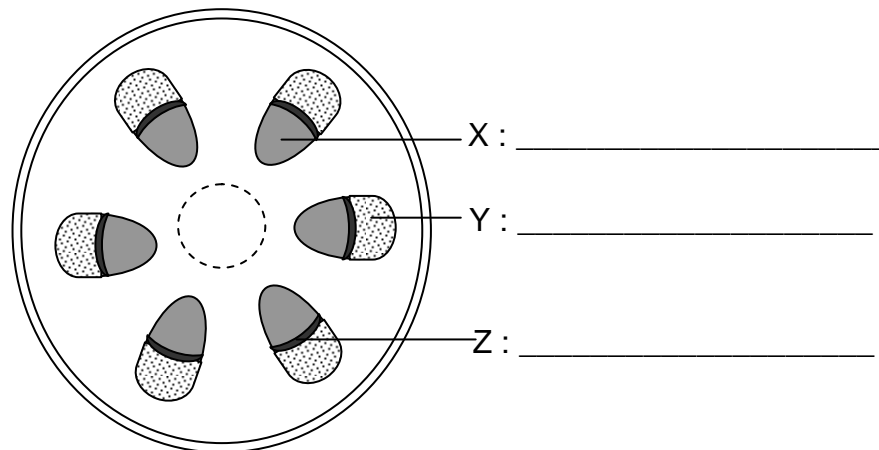


FIGURE 22
RAJAH 22

(a) Label X, Y and Z on Figure 22 with the following words
 (Labelkan X,Y dan Z pada Rajah 22 menggunakan perkataan-perkataan berikut):

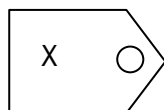
Cambium	Xylem	Phloem
---------	-------	--------

[3 marks]

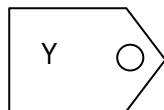
(b) Draw lines to show the correct match between the structures and their functions.
 Draw the lines as shown below. (Padankan struktur dengan fungsinya yang betul)

Structure / Struktur

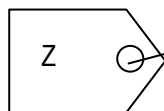
Function / Fungsi



Transport water and mineral salts from the roots to the leaves (Mengangkut air dan garam mineral daripada akar ke daun)



Transport food from the leaves to all parts of the plant (Mengangkut makanan daripada daun ke bahagian lain tumbuhan)



Produce new xylem and phloem cells for the plant (Menghasilkan sel xilem dan floem yang baru)

Carries out photosynthesis (Menjalankan proses fotosintesis)

[2 marks]

23. Figure 23 shows the longitudinal section of the kidney.
 (Rajah 23 menunjukkan keratan memanjang ginjal)

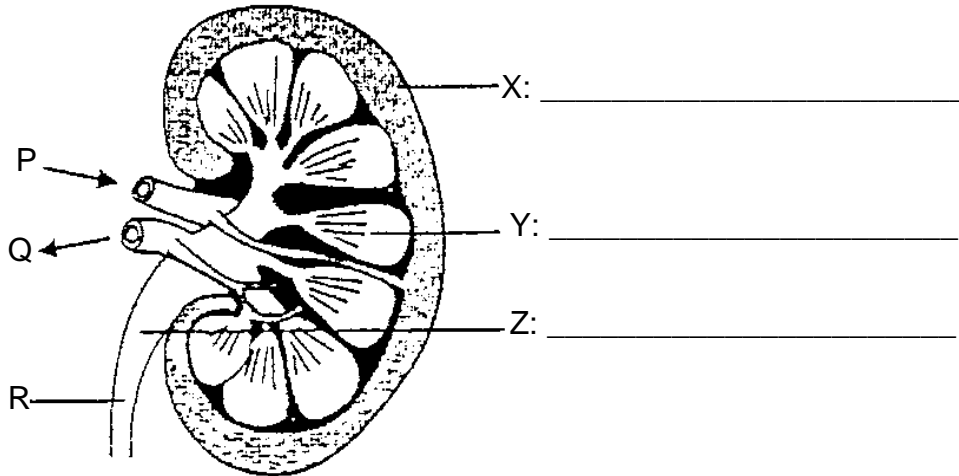


FIGURE 23
 RAJAH 23

(a) On the figure, label X, Y and Z with the following words. (Pada rajah itu labelkan X, Y dan Z dengan perkataan-perkataan berikut :)

Medulla	Pelvis	Cortex
---------	--------	--------

[3 marks]

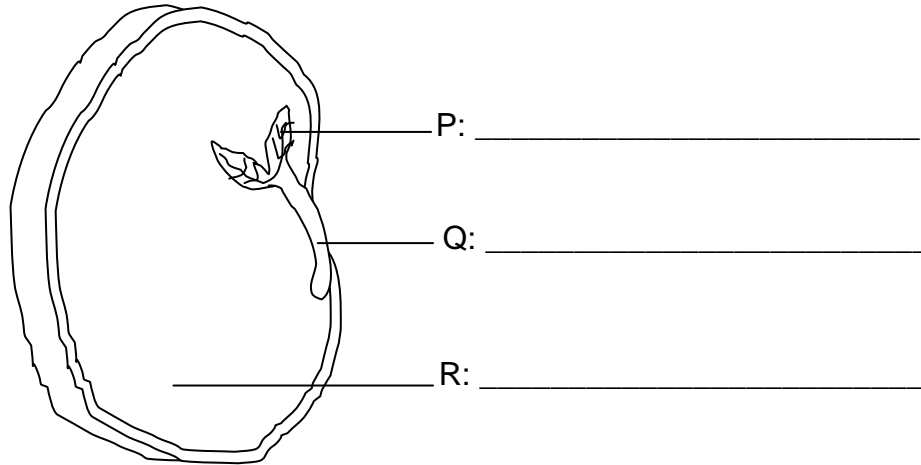
(b) Name the excretory products that are found in R.
 (Namakan bahan-bahan buangan yang terdapat dalam R)

_____ [1 mark]

(c) State **one** difference between the blood that flows through P and Q.
 (Nyatakan **satu** perbezaan antara darah yang mengalir melalui P dan Q)

[1 mark]

24. Figure 24 shows the structure of a seed. (Rajah 24 menunjukkan struktur biji benih)



FIGURE/ RAJAH 24

(d) On the figure, label P, Q and R with the following words. (Pada rajah labelkan P,Q dan R dengan perkataan-perkataan berikut :)

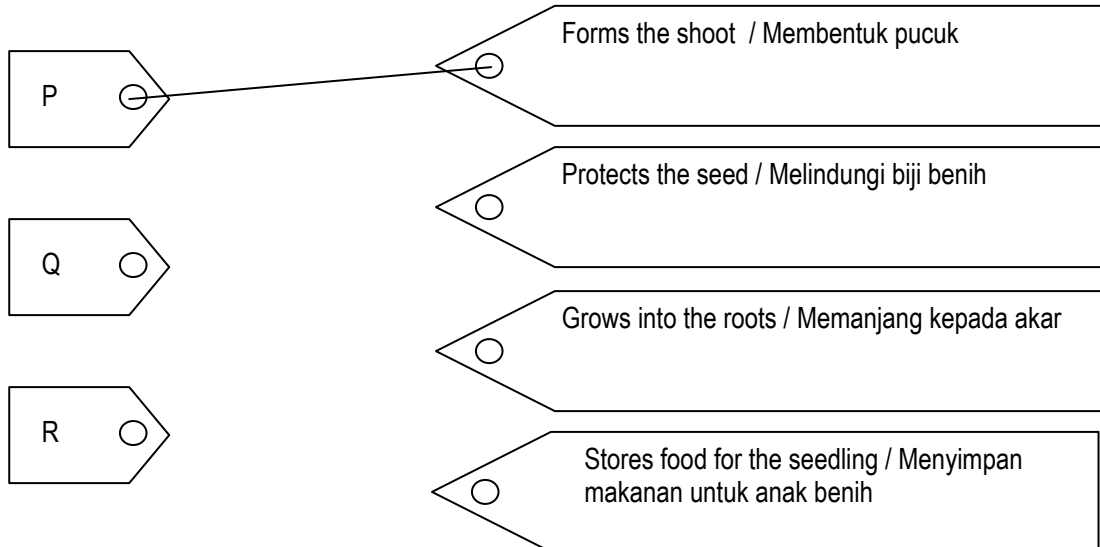
Cotyledon	Plumule	Radicle
-----------	---------	---------

[3 marks]

(e) Draw lines to show the correct match between the structures and their functions. Draw the lines as shown below. (Padankan struktur dengan fungsinya yang betul)

Structure / Struktur

Function / Fungsi



25. Figure 25 shows the longitudinal section of a flower. (Rajah 25 menunjukkan keratan memanjang sekuntum bunga)

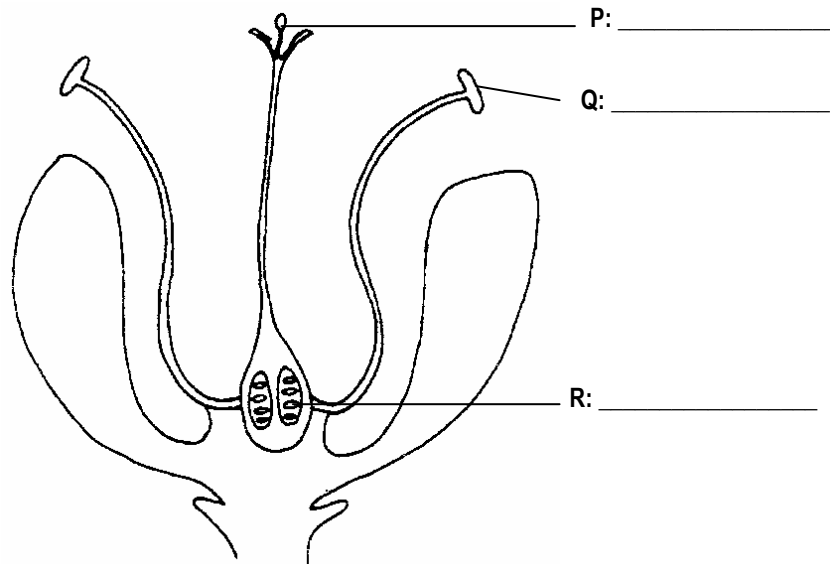


FIGURE 25

(f) On Figure 25, label P, Q and R with the following words. (Pada rajah 25, labelkan P, Q dan R dengan perkataan-perkataan berikut :)

Ovule	Stigma	Anther
-------	--------	--------

[3 marks]

(g) Draw lines to show the correct match between the structures and their functions. Draw the lines as shown below. (Padankan struktur bunga dengan fungsinya yang betul)

<u>Structure</u>	<u>Function</u>
<div style="border: 1px solid black; padding: 5px; display: inline-block; margin-bottom: 10px;">P</div> <div style="border: 1px solid black; padding: 5px; display: inline-block; margin-bottom: 10px;">Q</div> <div style="border: 1px solid black; padding: 5px; display: inline-block;">R</div>	<div style="border: 1px solid black; padding: 5px; margin-bottom: 10px;">Produces pollen grains / Menghasilkan butir debunga</div> <div style="border: 1px solid black; padding: 5px; margin-bottom: 10px;">Contains the female gametes / Mengandungi gamet betina</div> <div style="border: 1px solid black; padding: 5px; margin-bottom: 10px;">Receives pollen grains during pollination / Menerima butir debunga semasa pendebungaan</div> <div style="border: 1px solid black; padding: 5px;">Produces nectar / Menghasilkan nektar</div>

[2 marks]

26. Figure 26 shows a developing foetus. (Rajah 26 menunjukkan perkembangan fetus)

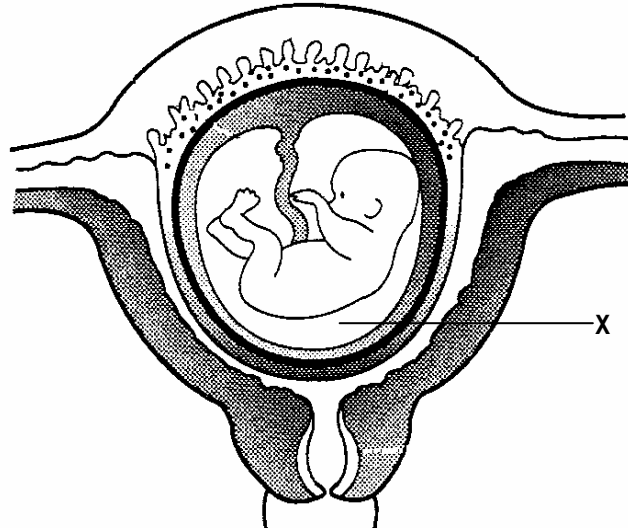


FIGURE 26

(a) Label the following on Figure 26. (Labelkan rajah 26 dengan perkataan-perkataan berikut :)

Umbilical cord	Foetus	Placenta
----------------	--------	----------

[3 marks]

(b) Identify fluid X and state the function of X. (Kenalpasti cecair X dan nyatakan fungsinya)

Fluid X / Cecair X	Function / Fungsi

[2 marks]

(c) Complete the sequence to show the stages in the development of a foetus. (Lengkapkan carta aliran menunjukkan peringkat-peringkat perkembangan fetus)



[1 mark]

27. Figure 27 shows the human growth curve. (Rajah 27 menunjukkan lengkung pertumbuhan manusia)

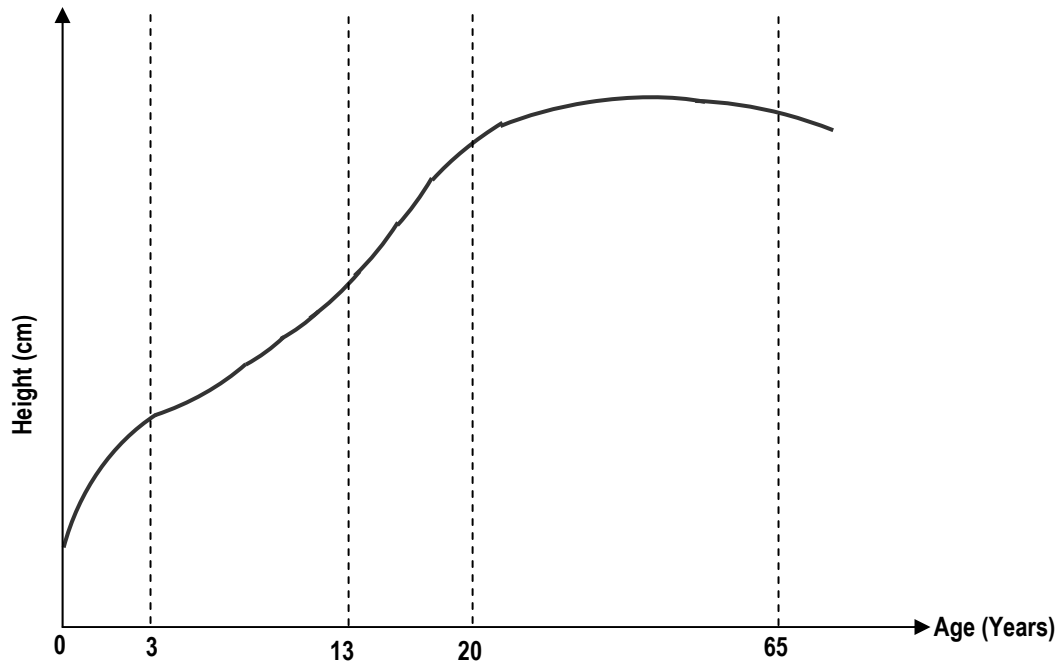


FIGURE 27

(a) On Figure 27, label the following stages. (Pada Rajah 27 labelkan peringkat-peringkat berikut :)

Adulthood / Dewasa	Infancy / Bayi	Adolescence / Remaja
--------------------	----------------	----------------------

[3 marks]

(b) At which stage does a person experience minimal growth ?
(Pada peringkat mana manusia mengalami pertumbuhan paling minima ?)

[1 mark]

(c) Why is the growth rate of girls faster than boys in the early stage of adolescence ?
(Mengapa kadar pertumbuhan perempuan lebih cepat berbanding lelaki pada awal remaja ?)

[1 mark]

28. Figure 28 shows the fractions obtained from the distillation of petroleum. (Rajah 28 menunjukkan pecahan-pecahan petroleum yang diperolehi daripada penyulingan berperingkat petroleum)

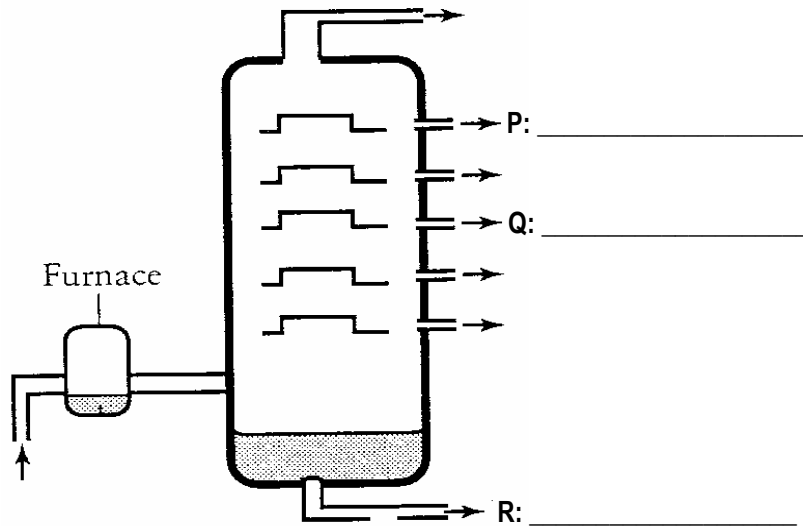


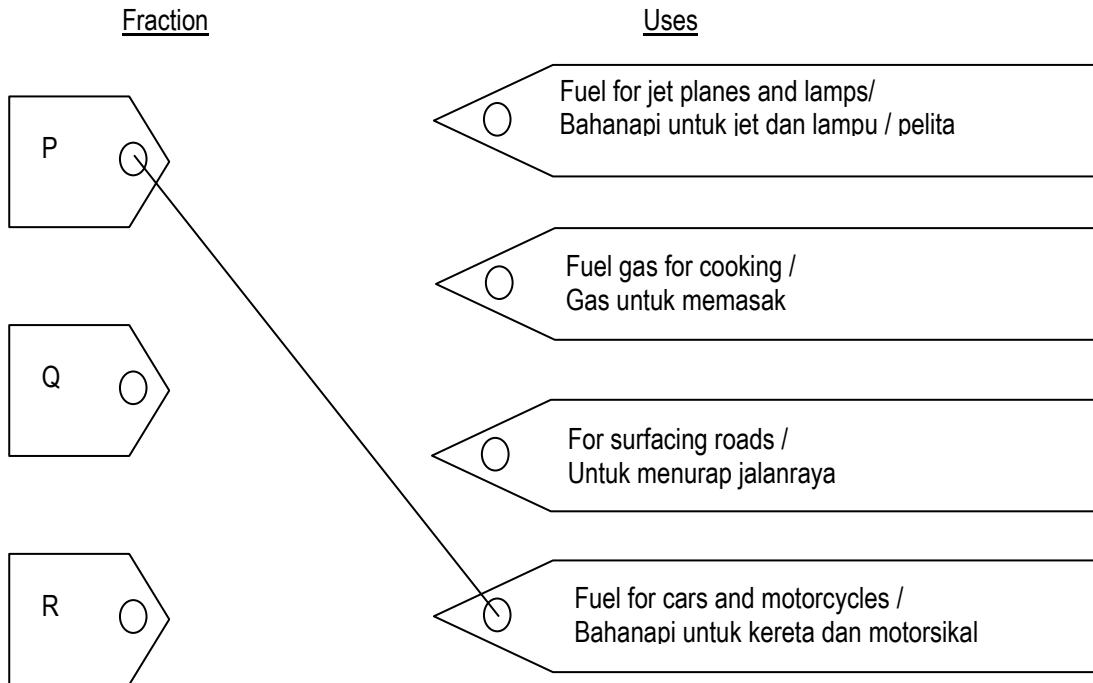
FIGURE 28

- (a) On Figure 28, label P, Q and R with the following words.
(Pada Rajah 28, labelkan P, Q dan R dengan perkataan-perkataan berikut :)

Bitumen	Petrol	Kerosene
---------	--------	----------

[3 marks]

- (b) Draw lines to show the correct match between the fractions and their uses.
Draw the lines as shown below. (Padankan pecahan-pecahan dengan kegunaannya)



[2 marks]

29. Figure 29 shows two different types of electric circuits, P and Q. The components in circuits P and Q are the same. (Rajah 29 menunjukkan dua jenis litar elektrik P dan Q. Komponen-komponen dalam litar P dan Q adalah sama)

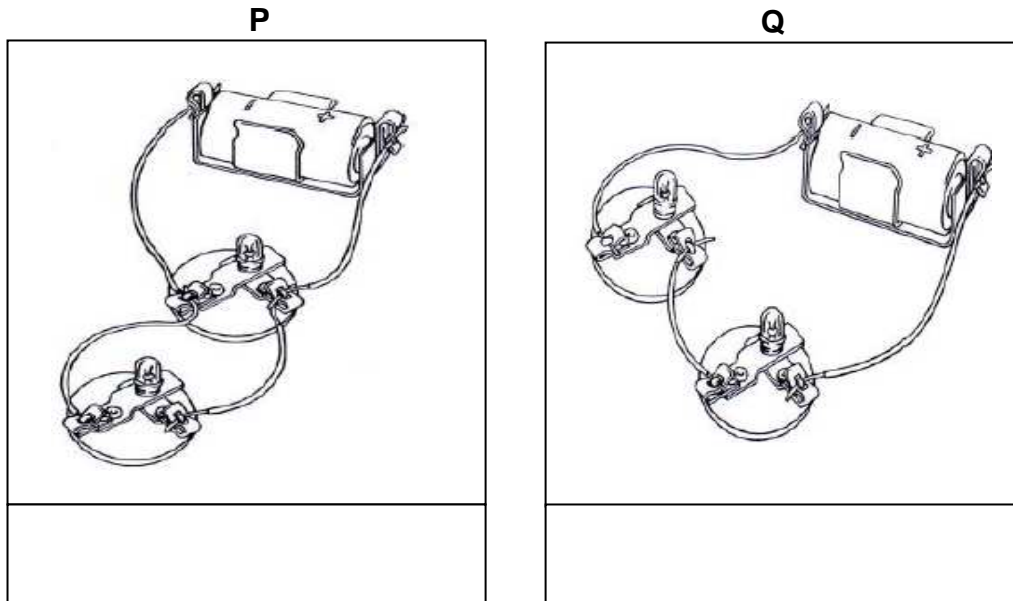


FIGURE 29

(a) Name the type of circuit shown in Figure 29 with the following words.
(Namakan jenis litar di atas dengan perkataan berikut :)

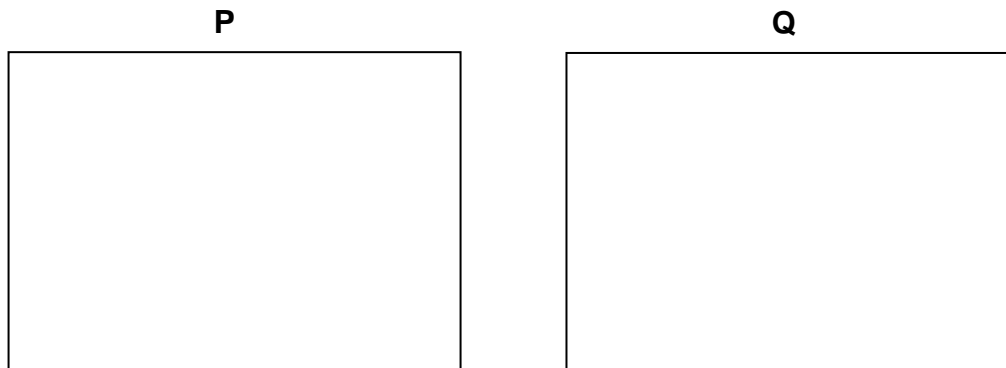
Parallel circuit / Litar Selari	Series circuit / Litar Bersiri
---------------------------------	--------------------------------

[2 marks]

(b) In which circuit will the bulb lights up brighter ? (Dalam litar mana mentol menyala lebih terang ?)

[1 mark]

(c) Draw a circuit diagram for P and Q. (Lukis rajah litar P dan Q)



[2 marks]

