

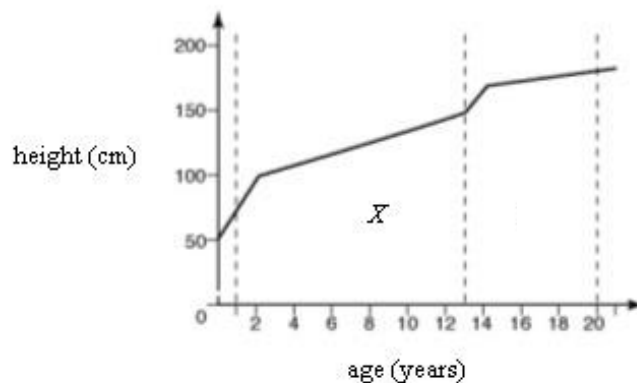
Chapter 22 Growth

Paper 1

Answer **all** questions. Each question is followed by four options, **A, B, C** and **D**. For each question, choose **one** answer only.

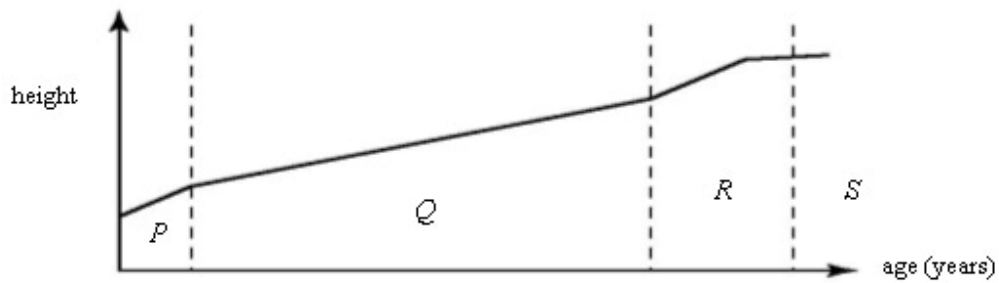
1. What disease is caused by a deficiency in protein?
A Diarrhoea
B Anaemia
C Kwashiorkor
D Beri-beri
2. Which of the following statements is **true** about human growth?
I Male and female children grow at the same rate.
II The fastest growth occurs at the infancy.
III Growth continues at the adulthood.
A II only
B I and II only
C I and III only
D I, II and III
3. Why is mother's milk given priority when feeding a baby?
I To foster intimate emotional and psychological relationship between the mother and her child
II It contains nearly all the nutrients, vitamins and mineral salts required
III It contains antibodies which can prevent the baby from catching diseases
A I only
B III only
C I and III only
D I, II and III

4.



The graph in the figure above shows human growth based on height. It is known that human growth can be divided into four stages. Which of the following

8.



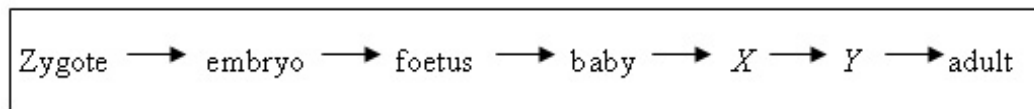
At which stage is the rate of growth of girls faster than that of boys in the figure above?

- A P
- B R
- C Q and R
- D P, Q and R

9. The pairs below show the need for various nutrients and their respective functions in children. Which pair is **correct**?

- | | <i>Nutrient</i> | <i>Function</i> |
|---|-----------------|-------------------------------|
| A | Iron | Builds body tissues |
| B | Vitamin | Prevents constipation |
| C | Phosphorus | Builds red blood cells |
| D | Calcium | Builds strong bones and teeth |

10.



Which of the following is **true** about stages X and Y shown above?

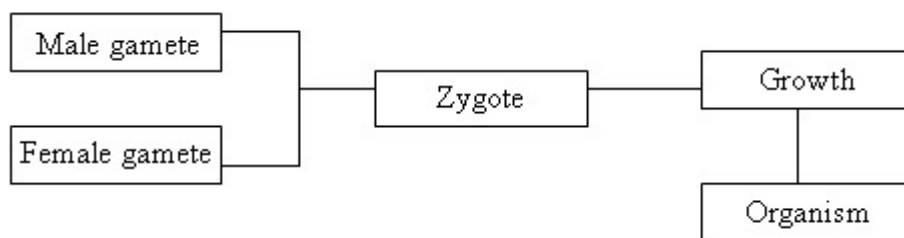
- A Puberty is attained at stage X.
- B Rate of growth at stage X is the fastest.
- C Rate of growth at stage Y is the lowest.
- D Secondary sexual characteristics begin to develop at stage Y.

11. Iron is required by humans to

- A built red blood cells
- B maintain a healthy body
- C build strong bones
- D maintain hormonal balance

12. Which of the following types of food is required in large quantities by children during adolescence?
- I Carbohydrate
 - II Protein
 - III Roughage
- A I and II only
 - B I and III only
 - C II and III only
 - D I, II and III only
13. Which of the statements below is **true** about human growth?
- A A person does not experience any growth at old age.
 - B The rate of growth of parts of the body is the same at different times.
 - C Infants experience the fastest growth rate.
 - D Human growth only involves physical changes.
14. What is the recommended food for babies less than four months old?
- A Porridge
 - B Starch
 - C Powdered milk
 - D Mothers' milk

15.

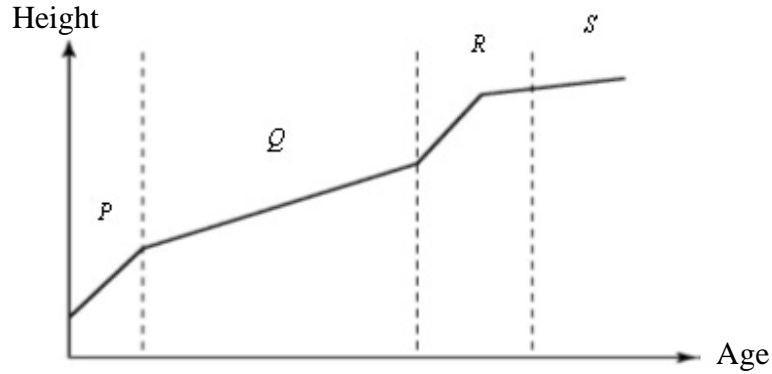


The figure above shows an important process of high level organisms. What is the importance of this process?

- A Ensures that a species of organism does not become extinct
- B Ensures that the population is under control
- C Ensures that the offspring is superior to the parents
- D Ensures that the number of males and females of the organism is about the same

Paper 2

Answer the question.



The graph in the figure above shows the human growth curve based on body height.

(a) State the stages of growth *P*, *Q*, *R* and *S*.

P : _____

Q : _____

R : _____

S : _____

(b) State **one** factor which influences the rate of growth in children.

(c) At which stage does a person experience nearly no growth at all?

(d) State **two** parts of the body which experience lifelong growth.

(i) _____

(ii) _____

(e) At which stage does a human reach puberty?

Answers:

Paper 1

1	C	11	A
2	A	12	A
3	D	13	C
4	B	14	D
5	A	15	A
6	A		
7	C		
8	B		
9	D		
10	D		

Paper 2

- (a) *P*: Babyhood/ Infancy
Q: Childhood
R: Adolescence
S: Adulthood
- (b) Food/Nutrition
- (c) *S* / At adulthood
- (d) (i) Hair
(ii) Nails
- (e) *R* / Adolescence