

Chapter 20 Excretion

Paper 1

Answer **all** questions. Each question is followed by four options, **A, B, C** and **D**. For each question, choose **one** answer only.

1.

Excretory substance	Content in grams per 100 ml
Water	96.0
Urea	2.0
Mineral salts	1.2

The table above shows excretory substances and their respective contents. Which of the following organs excretes these substances?

- A Lung
- B Skin
- C Kidney
- D Large intestine

2. The following are excretory organs **except** the

- A skin
- B kidney
- C lung
- D small intestine

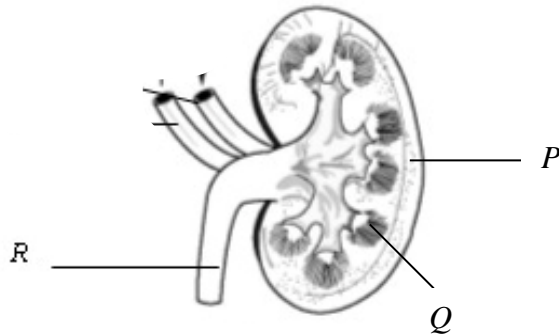
3.



The figure above shows a longitudinal section of the kidney. The part labelled *R* functions to

- A transport urine to the urinary bladder
- B transport blood from the kidney
- C transport blood to the kidney
- D control the amount of water and mineral salts in the body

4.



The figure above shows a longitudinal section of the kidney. Which of the following are represented by the structures labelled *P*, *Q* and *R*?

	<i>P</i>	<i>Q</i>	<i>R</i>
A	Medulla	Cortex	Ureter
B	Cortex	Medulla	Ureter
C	Ureter	Renal artery	Renal vein
D	Pelvis	Medulla	Cortex

5. Which of the following **correctly** matches the excretory product of plants with its use?

	<i>Excretory product</i>	<i>Use</i>
A	Resin	Manufacture of ink
B	Quinine	Softens skin
C	Latex	Manufacture of rubber gloves
D	Tannin	Manufacture of varnish

6. Which of the following channels removes urine from the urinary bladder out of the body?

- A** Urethra
- B** Ureter
- C** Uterus
- D** Pelvis

7. Which of the following is **not** an excretory substance of plants?

- A** Water
- B** Oxygen
- C** Mineral salts
- D** Carbon dioxide

8. Besides functioning as a sensory organ, the skin also functions to remove the following excretory substances **except**
- A water
 - B urea
 - C mineral salts
 - D carbon dioxide
9. Excess water is excreted through the
- I lungs
 - II kidneys
 - III skin
- A I and II only
 - B I and III only
 - C II and III only
 - D I, II and III
10. Urea and excess mineral salts are excreted through the
- I kidneys
 - II skin
 - III lungs
- A I and II only
 - B I and III only
 - C II and III only
 - D I, II and III
11. How are excretory substances in plants removed?
- I Through photosynthesis
 - II Through respiration
 - III Through transpiration
- A I and II only
 - B I and III only
 - C II and III only
 - D I, II and III
12. Which of the following are the functions of the kidneys?
- I Remove excess water containing urea and mineral salts
 - II Help to control the concentration of blood
 - III Change excess protein into amino acid
- A I and II only
 - B I and III only
 - C II and III only

D I, II and III

13. Which of the following matches **correctly** an excretory organ and its excretory product?

	<i>Excretory organ</i>	<i>Excretory product</i>
A	Kidneys	Carbon dioxide
B	Skin	Mineral salts
C	Lungs	Urea
D	Heart	Mineral salts

14. Which of the following are released through the stoma pores in the leaves of a green plant?

- I** Oxygen
- II** Water
- III** Carbon dioxide

- A** I and II only
- B** I and III only
- C** II and III only
- D** I, II and III

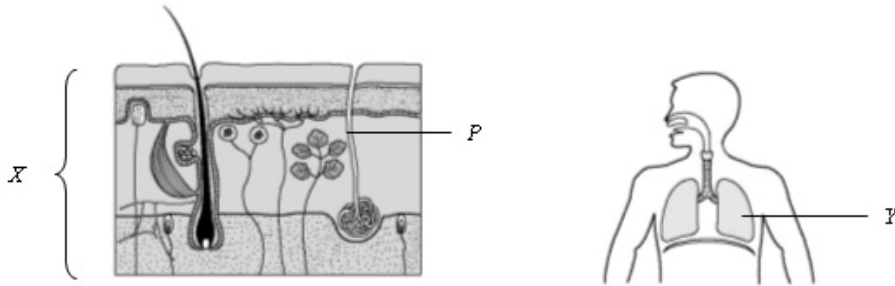
15. Which of the following are transported by blood capillaries to the alveoli of the lungs?

- I** Carbon dioxide
- II** Water
- III** Mineral salts

- A** I and II only
- B** I and III only
- C** II and III only
- D** I, II and III

Paper 2

Answer the question.



The figure above shows two human excretory organs, *X* and *Y*.

(a) Name the excretory organs.

(i) *X* : _____

(ii) *Y* : _____

(b) What is the function of the structure labelled *P* ?

(c) Give **two** examples of excretory substances removed by the organs *X* and *Y*.

(i) *X* : _____

(ii) *Y* : _____

(d) How do organs *X* and *Y* remove excretory substances?

(i) *X* : _____

(ii) *Y* : _____

(e) What would happen if the excretory products accumulate in our body?

Answers:

Paper 1

1	C	11	D
2	D	12	A
3	A	13	B

4	B	14	D
5	C	15	A
6	A		
7	C		
8	D		
9	D		
10	A		

Paper 2

- (a) (i) Skin
(ii) Lungs
- (b) To remove excretory substances (sweat) from the body.
- (c) (i) Water and mineral salts
(ii) Carbon dioxide and water vapour
- (d) (i) Sweating
(ii) Exhaling
- (e) The excretory products will become toxic and may endanger our health.