

Chapter 15 Support and Movement

Paper 1

Answer **all** questions. Each question is followed by four options, **A, B, C** and **D**. For each question, choose **one** answer only.

1. Among the following pairs of organisms with their types of support, which is **correct**?

	Organism	Support
A	Caterpillar	Body fluid
B	Beetle	Body fluid
C	Durian tree	Turgidity of cell
D	Long bean	Woody stem

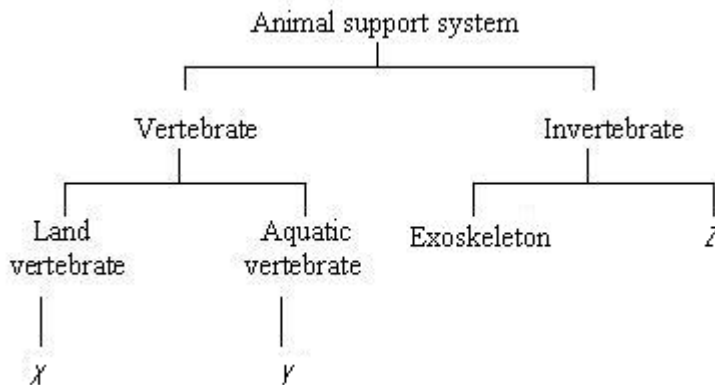
2. Which of the following plants is supported by woody tissue?

- A Balsam plant
- B Mango tree
- C Banana tree
- D Maize plant

3. Among the following, which supports aquatic plants in the water?

- A Woody tissues
- B Turgidity of cell
- C Buoyant force of water
- D Buttress root

4.



The diagram above shows the support system in vertebrates and invertebrates.

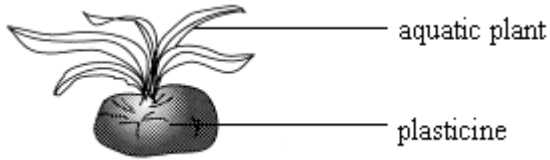
Among the following, which represents the support system of X, Y and Z?

- | X | Y | Z |
|-------------------------------|----------------------|----------------------|
| A Buoyancy of water | Hydrostatic skeleton | Endoskeleton |
| B Hydrostatic skeleton | Endoskeleton | Turgidity of cell |
| C Endoskeleton | Buoyancy of water | Hydrostatic skeleton |
| D Hydrostatic skeleton | Turgidity of cell | Buoyancy of water |

5. Plants that float on the water surface have
- A thorns
 - B woody tissue
 - C big stoma
 - D air sacs
6. The following are functions of a human skeleton **except**
- A it provides place for the muscles to attach
 - B it protects the internal organs
 - C it supplies food
 - D it supports the shape of the body
7. How is a seedling of cucumber plant able to stand upright?
- A It has clasping roots
 - B It is supported by its long roots
 - C It is supported by its strong stem
 - D It twines around the stems of other plants
8. The body of an invertebrate can be supported by
- I exoskeleton
 - II hydrostatic skeleton
 - III buoyancy of water
- A I only
 - B I and II only
 - C II and III only
 - D I, II, and III
9. The function of the exoskeleton of a beetle is to
- I give support
 - II maintain the shape of the body
 - III protect the internal organs
- A I only
 - B I and II only
 - C II and III only
 - D I, II, and III
10. Among the following trees, which is supported by turgidity of its cells?
- I Balsam plant
 - II Mustard plant
 - III Hibiscus plant
- A I only

- B I and II only
- C II and III only
- D I, II, and III

11.



How could the aquatic plant in the above diagram be made to stand upright?

- I Place it into a beaker of water
- II Place it into a tin filled with sand
- III Place it into a container filled with clay

- A I only
- B I and II only
- C II and III only
- D I, II, and III

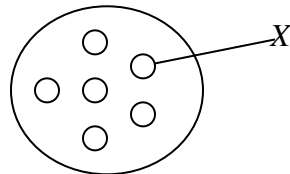
12. Among the following organisms, which has an endoskeleton to support its body?

- A Rat
- B Spider
- C Jellyfish
- D Crab

13. Which of the following pairs is **correct** about the animal and its type of skeleton?

<i>Animal</i>	<i>Type of skeleton</i>
A Caterpillar	Endoskeleton
B Squid	Exoskeleton
C Beetle	Exoskeleton
D Whale	Hydrostatic skeleton

14.



The diagram above shows a cross-section of the stem of an aquatic plant. What is X?

- A Stoma
- B Xylem
- C Air sac
- D Phloem

15.

- Mustard plant
- Spinach plant

Among the plants below, which has a support system similar to the plants above?

- A** Durian tree
- B** Cucumber plant
- C** Hibiscus plant
- D** Rambutan tree

Paper 2

Answer the question.

The figure below shows diagrams of animals *P*, *Q*, *R* and *S*.



P



Q



R



S

Observe the animals in the figure above.

Based on your observations,

(a) state **one** characteristic of animals *P*, *Q*, *R* and *S* based on its support system.

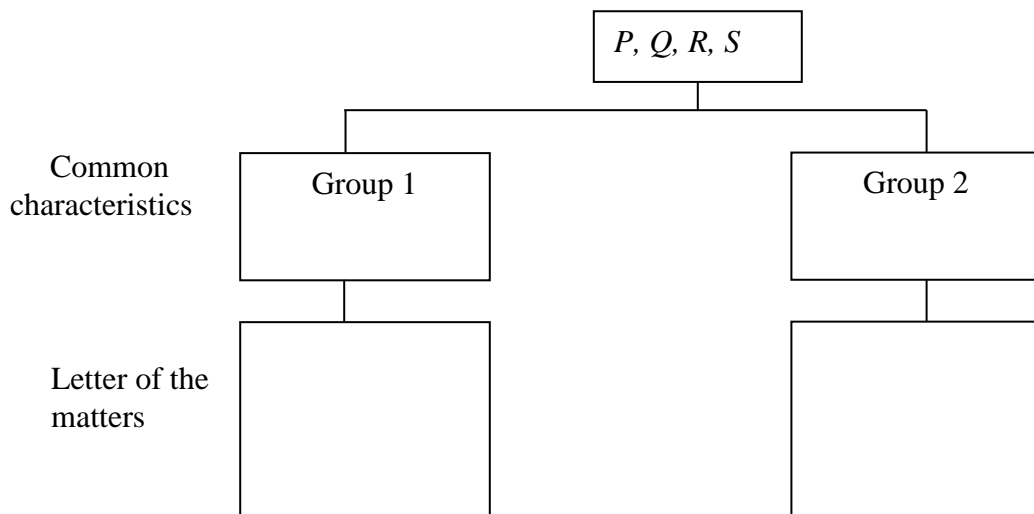
P: _____

Q: _____

R: _____

S: _____

(b) Classify animals *P*, *Q*, *R* and *S* in the figure above into two groups based on **common characteristics**. Write the letters of the animals belonging to each group.



Answers:

Paper 1

1	A	11	A
2	B	12	A
3	C	13	C
4	C	14	C
5	D	15	B
6	C		
7	D		
8	D		
9	D		
10	B		

Paper 2

- (a) *P*: Supported by an exoskeleton
Q: Supported by a hydrostatic skeleton
R: Supported by a hydrostatic skeleton
S: Supported by an exoskeleton
- (b) Group 1: Supported by exoskeleton; *P*, *S*
Group 2: Supported by hydrostatic skeleton; *Q*, *R*